

Playing Field Placement and Size Suggestions

01-25-2022

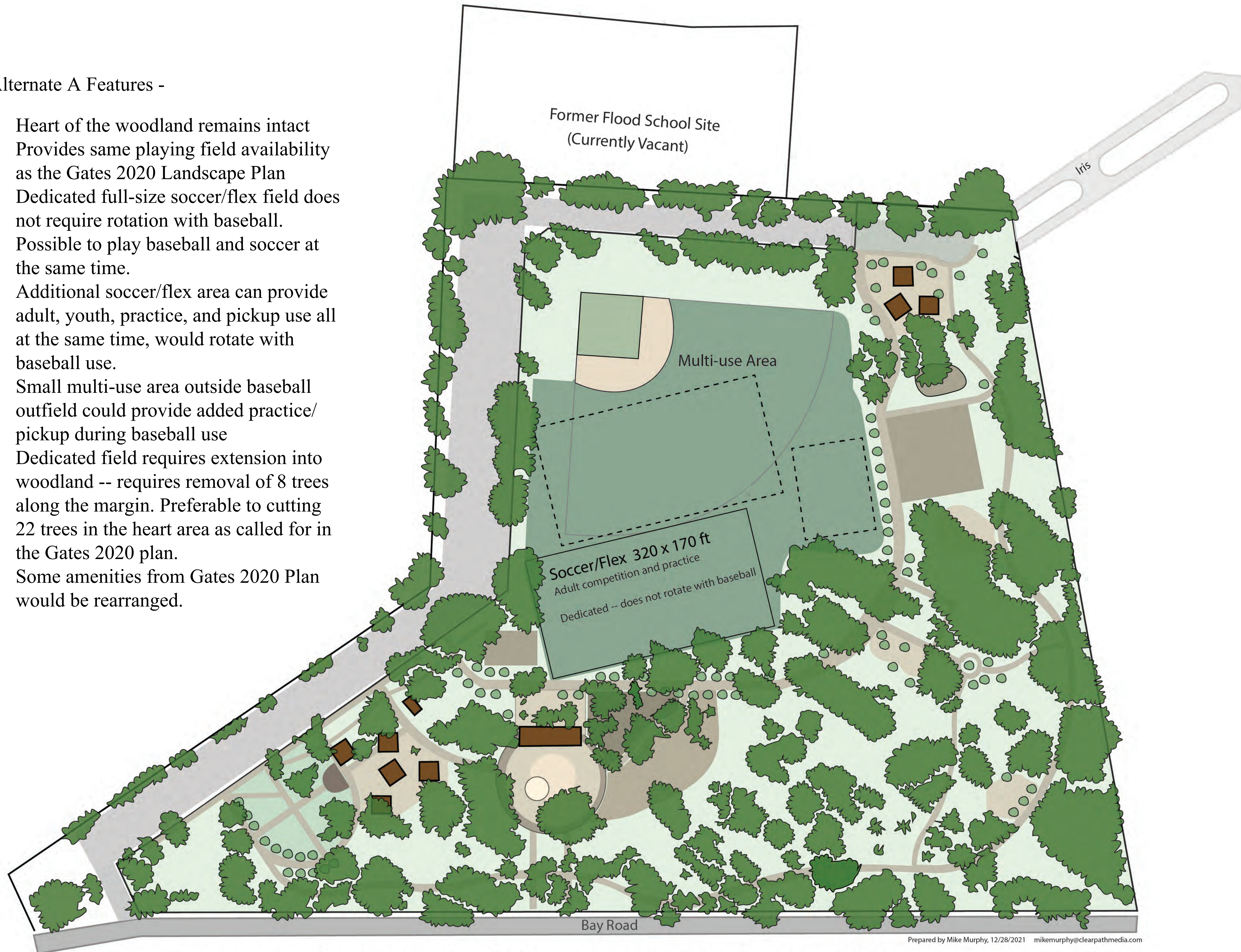
These placement alternatives provide multiple playing spaces for baseball, soccer, and other field sports without requiring the removal of the heart of the woodland.

Prepared by concerned members of the community and Flood Park Advocates

Additional information available at
FloodPark.org

Alternate A Features -

- Heart of the woodland remains intact
- Provides same playing field availability as the Gates 2020 Landscape Plan
- Dedicated full-size soccer/flex field does not require rotation with baseball. Possible to play baseball and soccer at the same time.
- Additional soccer/flex area can provide adult, youth, practice, and pickup use all at the same time, would rotate with baseball use.
- Small multi-use area outside baseball outfield could provide added practice/pickup during baseball use
- Dedicated field requires extension into woodland -- requires removal of 8 trees along the margin. Preferable to cutting 22 trees in the heart area as called for in the Gates 2020 plan.
- Some amenities from Gates 2020 Plan would be rearranged.



Alternate A - dedicated adult soccer field plus multi-use

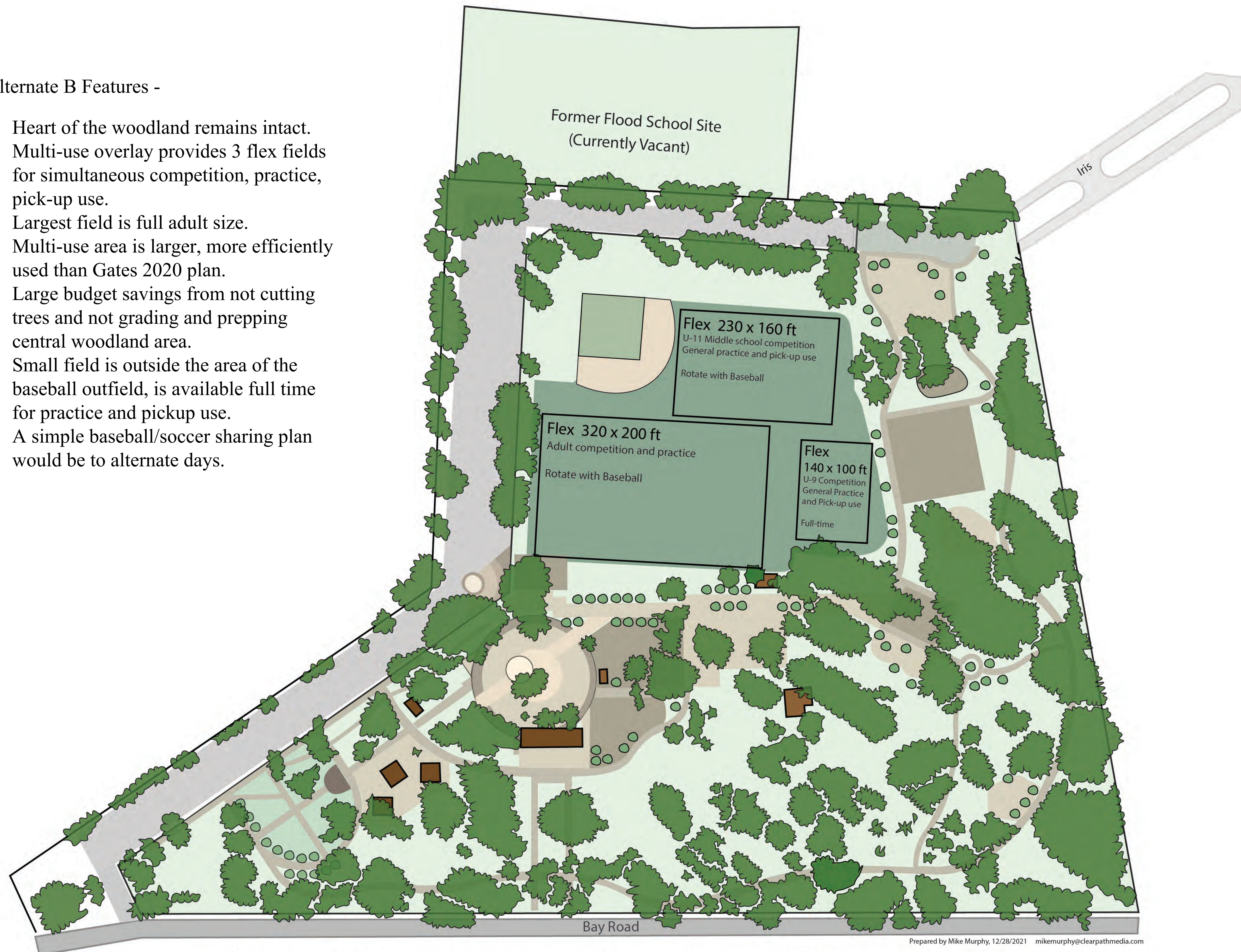
Prepared by Mike Murphy, 12/28/2021 mikemurphy@clearpathmedia.com

100 feet

Developed from aerial photographs and prior maps
Scale and features are approximate

Alternate B Features -

- Heart of the woodland remains intact.
- Multi-use overlay provides 3 flex fields for simultaneous competition, practice, pick-up use.
- Largest field is full adult size.
- Multi-use area is larger, more efficiently used than Gates 2020 plan.
- Large budget savings from not cutting trees and not grading and prepping central woodland area.
- Small field is outside the area of the baseball outfield, is available full time for practice and pickup use.
- A simple baseball/soccer sharing plan would be to alternate days.



Alternate B—3 Fields on expanded multi-use area

100 feet

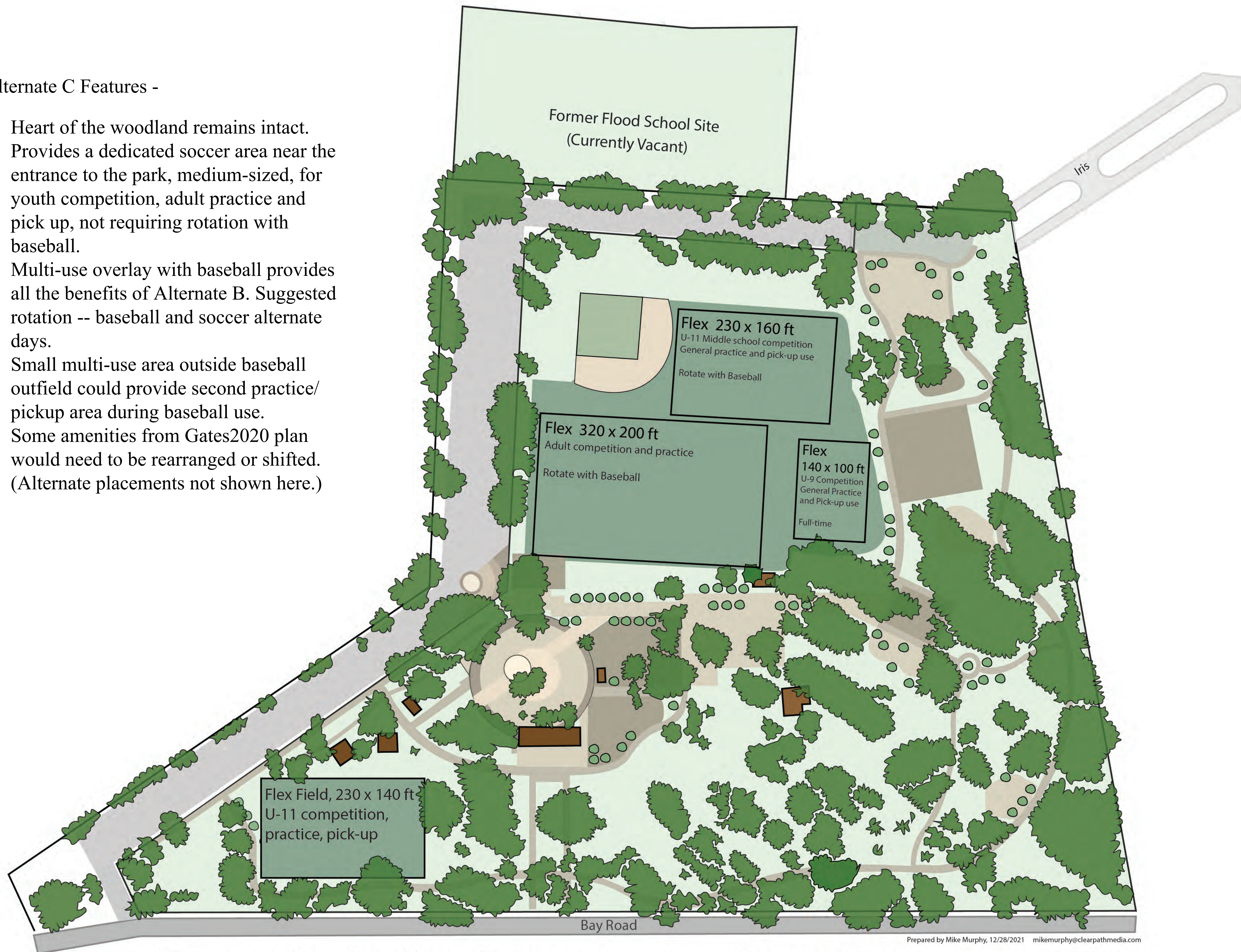
Prepared by Mike Murphy, 12/28/2021 mikemurphy@clearpathmedia.com

Developed from aerial photographs and prior maps

Scale and features are approximate

Alternate C Features -

- Heart of the woodland remains intact.
- Provides a dedicated soccer area near the entrance to the park, medium-sized, for youth competition, adult practice and pick up, not requiring rotation with baseball.
- Multi-use overlay with baseball provides all the benefits of Alternate B. Suggested rotation -- baseball and soccer alternate days.
- Small multi-use area outside baseball outfield could provide second practice/pickup area during baseball use.
- Some amenities from Gates2020 plan would need to be rearranged or shifted. (Alternate placements not shown here.)



Alternate C—Medium field at entrance plus multi-use

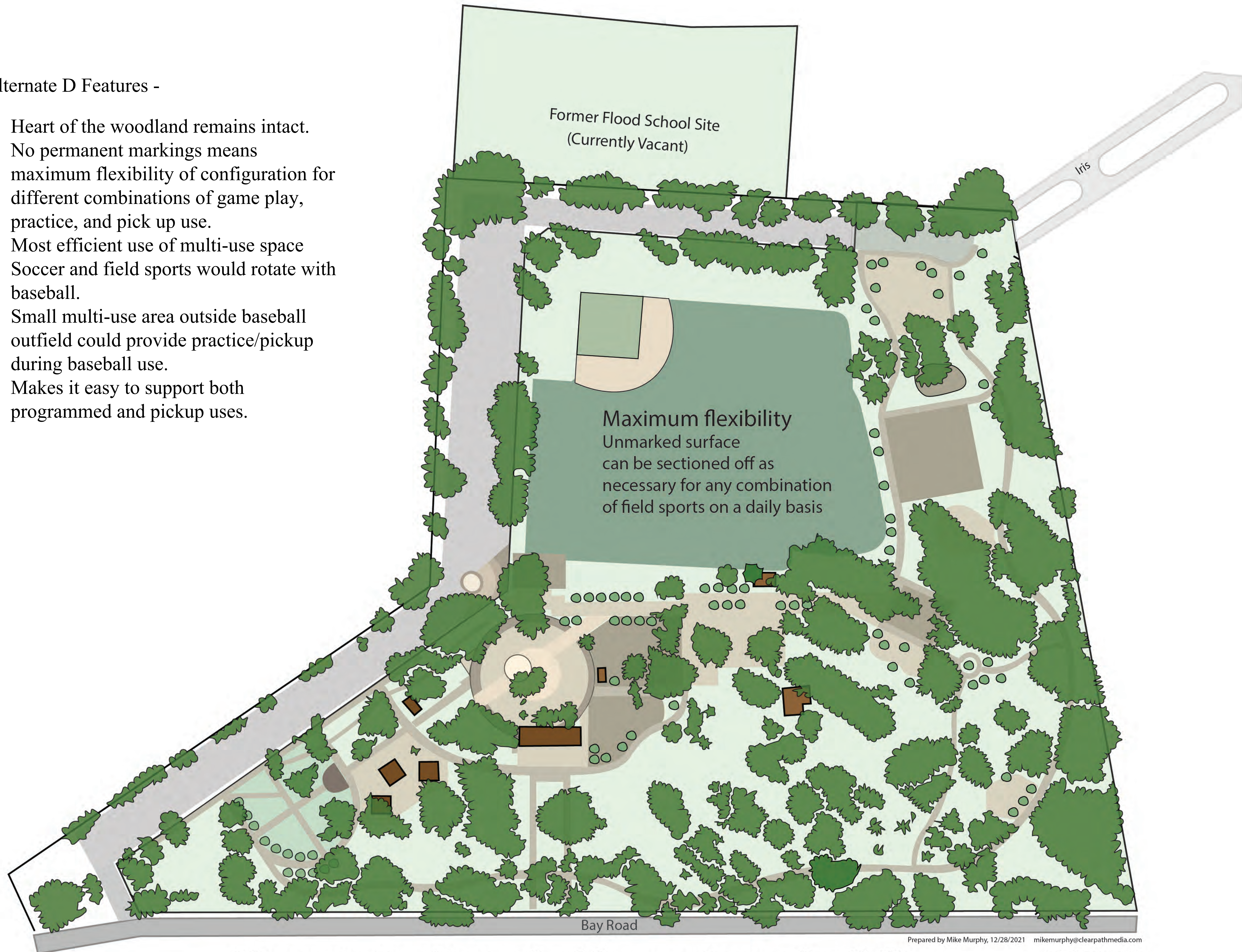
Prepared by Mike Murphy, 12/28/2021 mikemurphy@clearpathmedia.com

100 feet

Developed from aerial photographs and prior maps
Scale and features are approximate

Alternate D Features -

- Heart of the woodland remains intact.
- No permanent markings means maximum flexibility of configuration for different combinations of game play, practice, and pick up use.
- Most efficient use of multi-use space
- Soccer and field sports would rotate with baseball.
- Small multi-use area outside baseball outfield could provide practice/pickup during baseball use.
- Makes it easy to support both programmed and pickup uses.



Alternate D—Unmarked for maximum flexibility

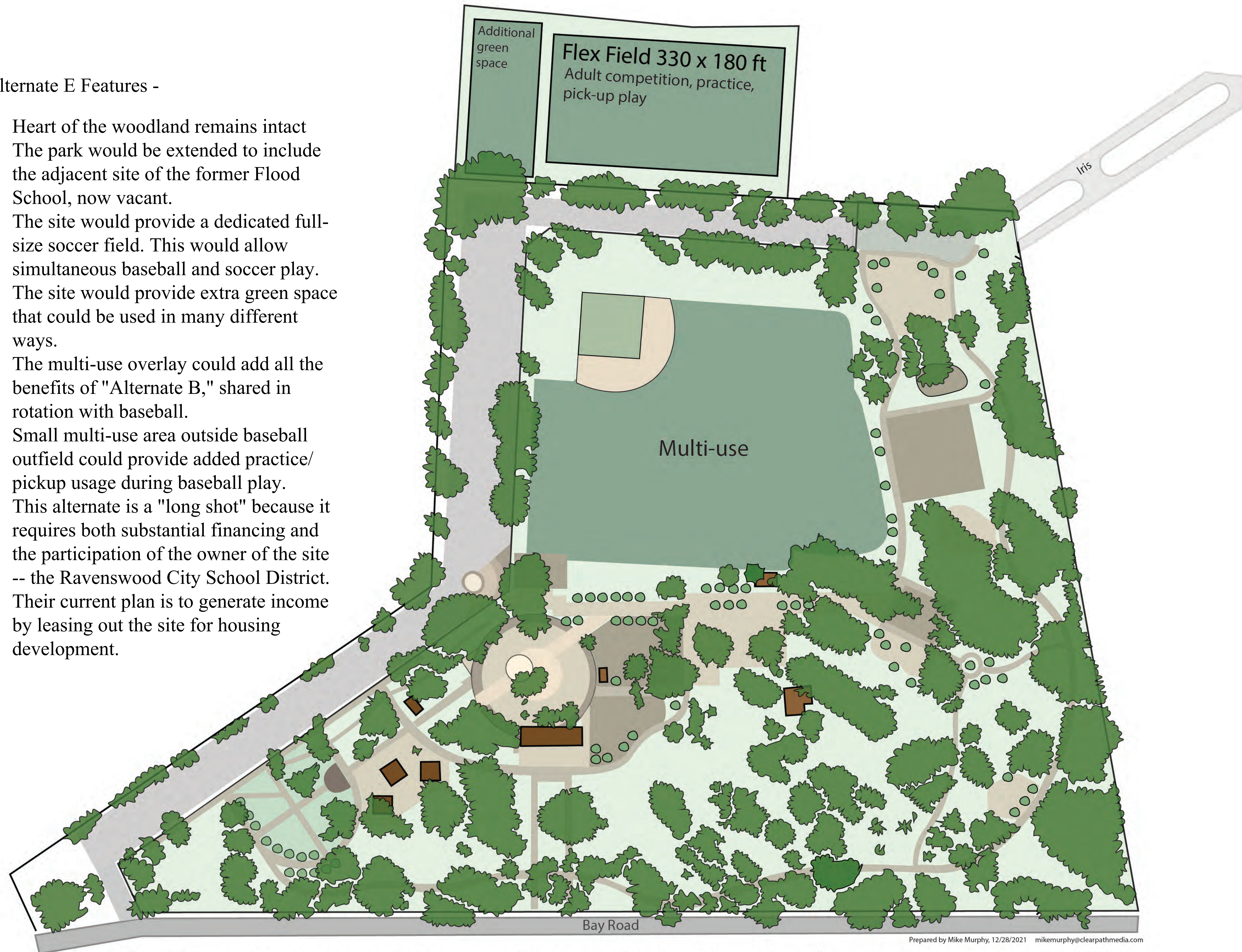
Prepared by Mike Murphy, 12/28/2021 mikemurphy@clearpathmedia.com

100 feet

Developed from aerial photographs and prior maps
Scale and features are approximate

Alternate E Features -

- Heart of the woodland remains intact
- The park would be extended to include the adjacent site of the former Flood School, now vacant.
- The site would provide a dedicated full-size soccer field. This would allow simultaneous baseball and soccer play.
- The site would provide extra green space that could be used in many different ways.
- The multi-use overlay could add all the benefits of "Alternate B," shared in rotation with baseball.
- Small multi-use area outside baseball outfield could provide added practice/pickup usage during baseball play.
- This alternate is a "long shot" because it requires both substantial financing and the participation of the owner of the site -- the Ravenswood City School District. Their current plan is to generate income by leasing out the site for housing development.



Alternate E—Extend the park to include Flood School site

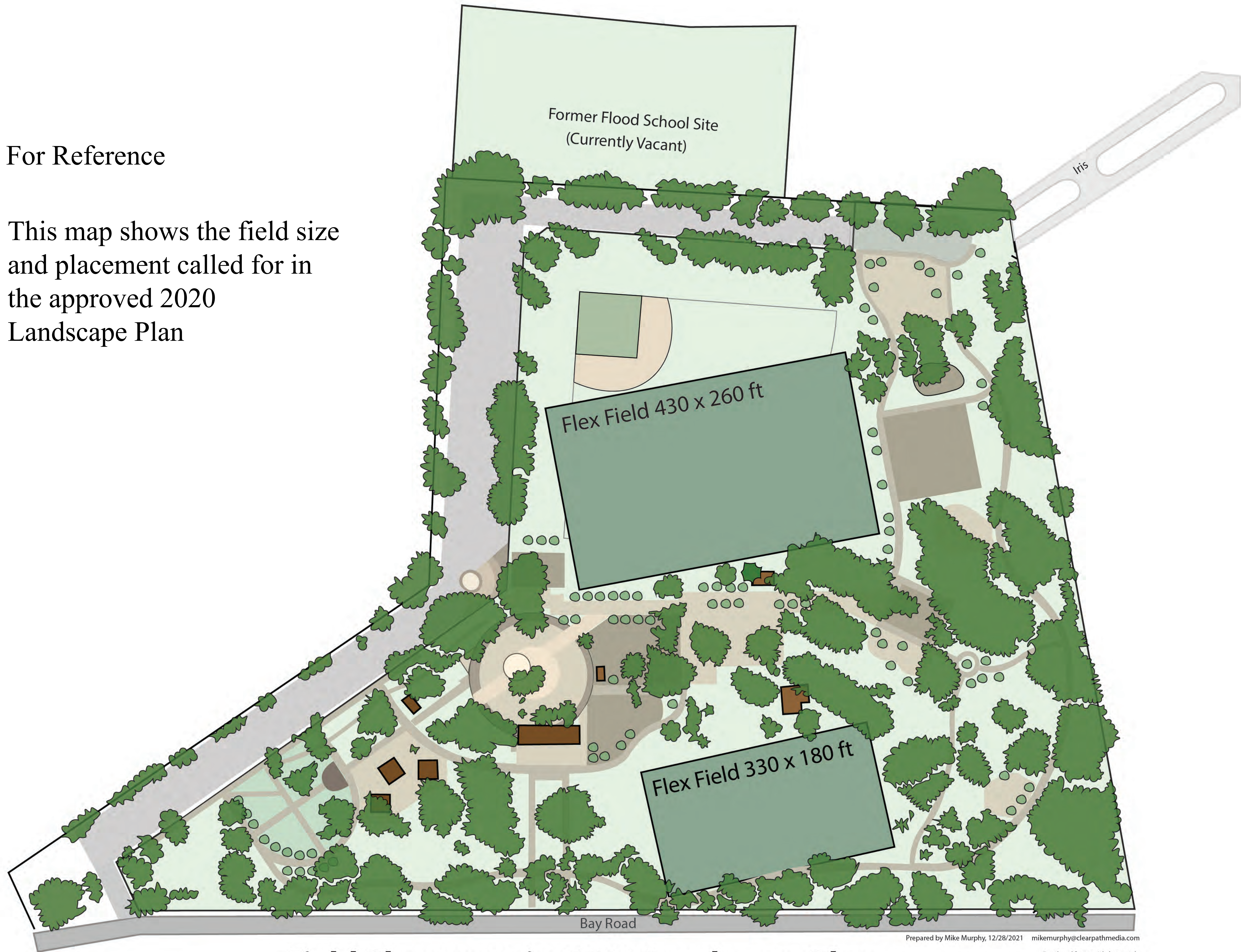
Prepared by Mike Murphy, 12/28/2021 mikemurphy@clearpathmedia.com

100 feet

Developed from aerial photographs and prior maps
Scale and features are approximate

For Reference

This map shows the field size and placement called for in the approved 2020 Landscape Plan



Field Placement in 2020 Landscape Plan

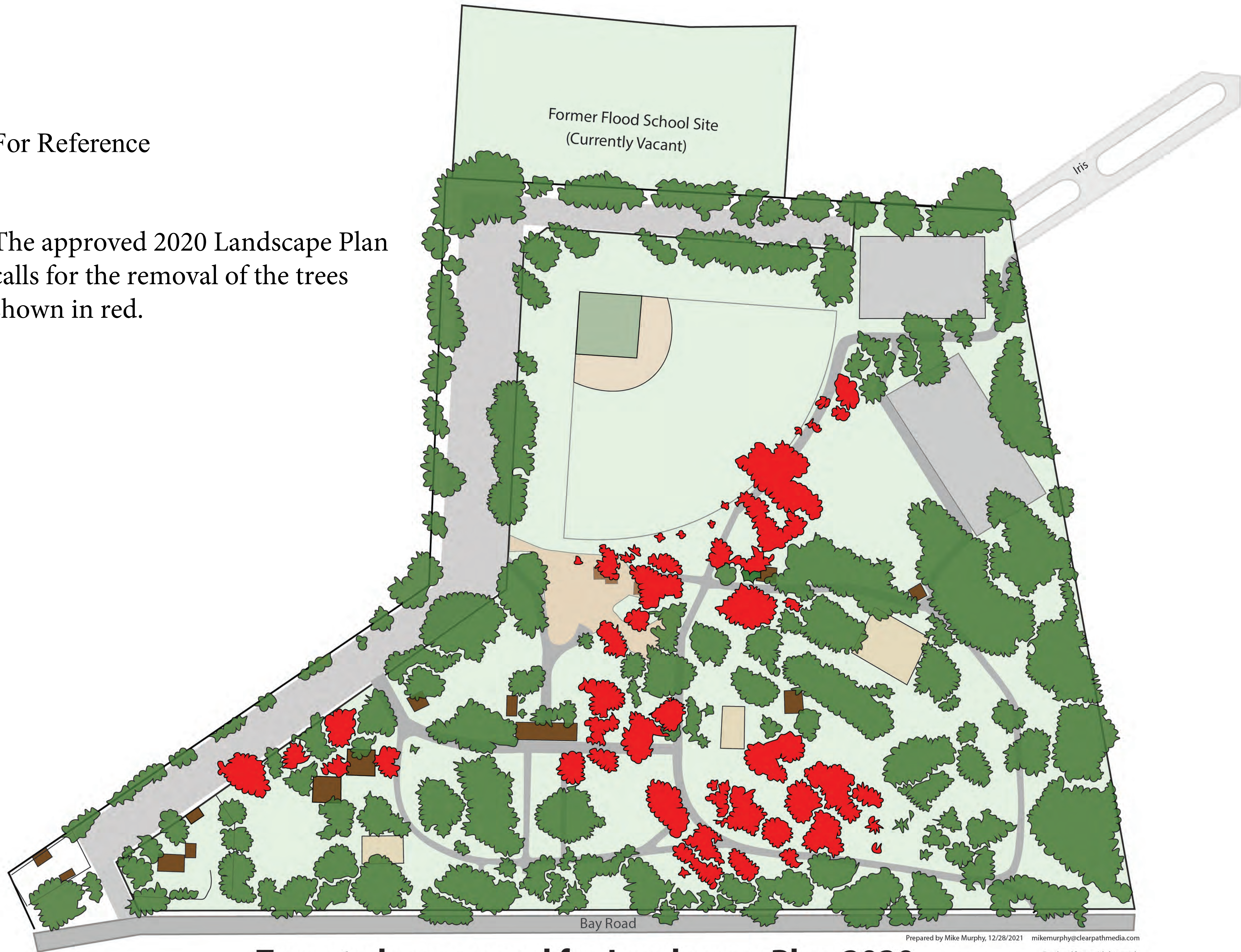
Prepared by Mike Murphy, 12/28/2021 mikemurphy@clearpathmedia.com

100 feet

Developed from aerial photographs and prior maps
Scale and features are approximate

For Reference

The approved 2020 Landscape Plan calls for the removal of the trees shown in red.



Trees to be removed for Landscape Plan 2020

Prepared by Mike Murphy, 12/28/2021 mikemurphy@clearpathmedia.com

100 feet

Developed from aerial photographs and prior maps
Scale and features are approximate